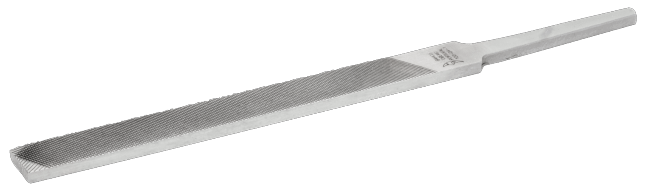




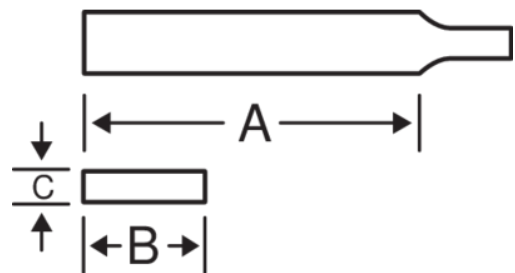
1-100...-0

Limas planas; corte basto, entrefino,
de corte liso sin mango



DETALLES DEL PRODUCTO

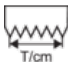
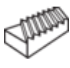

- Para trabajar en acero de alta aleación para el afilado de herramientas pesadas
- Para limado y desbastado de superficies planas, esquinas y codos
- Forma: Bordes y superficies paralelas
- Tipo de picado: 1 = Basto, 2 = Entrefino, 3 = Liso
- Superficies de picado doble, un borde sin picado, otro borde con picado sencillo
- Gran capacidad de rectificación
- Embalaje industrial, sin mango



Follow the Fish!



ATRIBUTOS DE PRODUCTO

| Producto | A | B | C |  |  |  |
|---------------------|----------|----------|----------|---|---|---|
| 1-100-04-1-0 | 100 mm | 12 mm | 3 mm | 15 | 1 | 30 g |
| 1-100-04-2-0 | 100 mm | 12 mm | 3 mm | 21 | 2 | 30 g |
| 1-100-04-3-0 | 100 mm | 12 mm | 3 mm | 29 | 3 | 30 g |
| 1-100-06-1-0 | 150 mm | 16 mm | 4 mm | 12 | 1 | 73 g |
| 1-100-06-2-0 | 150 mm | 16 mm | 4 mm | 17 | 2 | 73 g |
| 1-100-06-3-0 | 150 mm | 16 mm | 4 mm | 24 | 3 | 73 g |
| 1-100-08-1-0 | 200 mm | 20 mm | 5 mm | 10 | 1 | 145 g |
| 1-100-08-2-0 | 200 mm | 20 mm | 5 mm | 15 | 2 | 145 g |
| 1-100-08-3-0 | 200 mm | 20 mm | 5 mm | 21 | 3 | 145 g |
| 1-100-10-1-0 | 250 mm | 25 mm | 5.5 mm | 9 | 1 | 250 g |
| 1-100-10-2-0 | 250 mm | 25 mm | 5.5 mm | 12 | 2 | 250 g |
| 1-100-10-3-0 | 250 mm | 25 mm | 5.5 mm | 17 | 3 | 250 g |
| 1-100-12-1-0 | 300 mm | 30 mm | 6 mm | 7 | 1 | 392 g |
| 1-100-12-2-0 | 300 mm | 30 mm | 6 mm | 10 | 2 | 392 g |
| 1-100-12-3-0 | 300 mm | 30 mm | 6 mm | 15 | 3 | 392 g |
| 1-100-14-1-0 | 350 mm | 35 mm | 6 mm | 6 | 1 | 605 g |
| 1-100-14-2-0 | 350 mm | 35 mm | 6 mm | 9 | 2 | 605 g |

