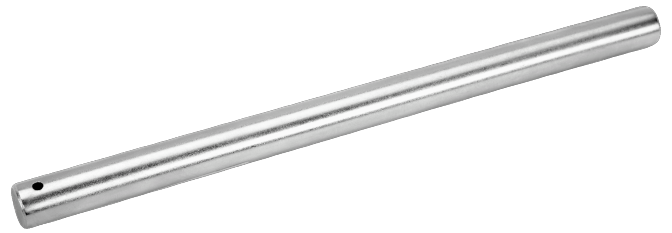




26S


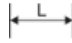

Stepped Tommy Bars with Chrome Finish



PRODUCT DETAILS

- 26S-610 for 1936M wrenches from 6 x 7 to 16 mm x 17 mm
- 26S-1216 for 1936M wrenches from 17 x 19 to 24 mm x 27 mm
- 26S-16 for 1936M wrenches from 25 x 28 to 46 mm x 50 mm
- Chrome plated micro-matte finishing provides high quality surface
- High-performance alloy steel

PRODUCT ATTRIBUTES

| Product |  |  |  |
|-----------------|---|---|---|
| 26S-610 | 6 8 10 mm | 178 mm | 120 g |
| 26S-1216 | 12 14 mm | 243 mm | 220 g |
| 26S-16 | 16 mm | 246 mm | 370 g |

Follow the Fish!

