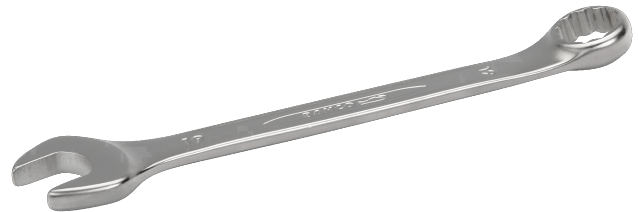




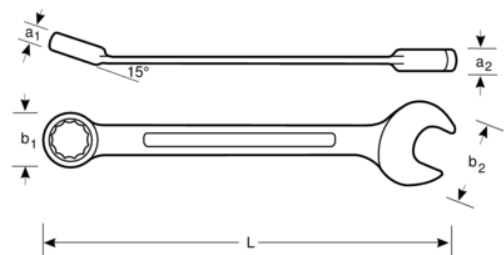
111M-9

**9 mm Flat Combination Wrench with
Chrome Finish 136 mm**



PRODUCT DETAILS



- Comfortable to use thanks to the patented U-shaped shank design
- Open end angle 15° with a slimmer head for improved accessibility
- Ring end angle 15° for knuckle clearance or better grip
- Larger and bi-directional size marking for easy identification
- SB: retail pack on a plastic info card
- 12-point Dynamic-Drive™ profile provides longer life for screws and nuts
- Chrome plated micro-matte finishing provides high quality surface
- High-performance alloy steel
- Optimised legibility and identification with high-contrast imprint
- Allows easy access to difficult places
- Standards: ISO 691, ISO 7738, ISO 3318, ISO 1711-1 and DIN 3113



Follow the Fish!



PRODUCT ATTRIBUTES

Product		L	a1	a2	b1	b2	
111M-9	9 mm	136 mm	6.1 mm	4.4 mm	14 mm	21 mm	31 g

Follow the Fish!

