

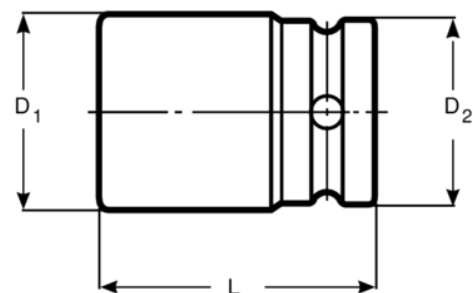


**BE1310P427**



## PRODUKTOPLYSNINGER




- Lige-kærvtoppe til montering/afmontering af Bosch- og Siemens-indsprøjtningssdyser
- 4 sekskantstørrelser: 25 mm, 27 mm, 29 mm og 30 mm
- BE1310P425 (25 mm) til Ford, PSA, Toyota
- BE1310P427 (27 mm) til 2.0 HDI-motorer
- BE1310P429 (29 mm) til Fiat 1.3 Multijet og Mercedes klasse A & B
- BE1310P430 (30 mm) til CDI- og HDI-motorer
- 1/2" indvendig firkant
- Højlegeret stål
- Forpakning



**Follow the Fish!**



## PRODUKTATTRIBUTTER

Produkt			<b>L</b>	<b>D1</b>	<b>D2</b>	
<b>BE1310P427</b>	27 mm	1/2 in	27 mm	100 mm	30 mm	305 g

**Follow the Fish!**

