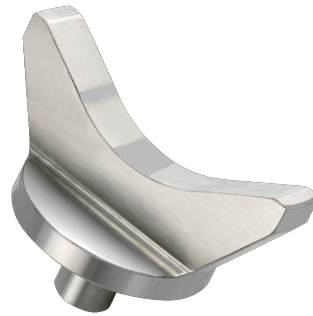











BH2AC60 Heavy-duty zadels



PRODUCTGEGEVENS

- Universele heavy-duty bewerkte zadels te gebruiken met het assortiment hydro-pneumatische krikken
- Gemaakt van bewerkte staal
- Maximale belasting 60 t
- Rond: BH2AC60-140. Diameter van 140 mm met ronde vorm om de positie onder voertuigen te vergemakkelijken
- V-vormig: BH2AC60V110, speciaal ontworpen voor montage rond assen
- Geschikt voor BH230, BH23015, BH23015C, BH2402010, BH2604020 en BH28050

PRODUCTKENMERKEN

| Product |  |  |  |  |  |  |  |
|--------------------|---|---|---|---|---|---|---|
| BH2AC60V110 | x | | 110 mm | 70 mm | 78 mm | 60000 kg | 0.97 kg |
| BH2AC60-140 | | x | 140 mm | 140 mm | 80 mm | 60000 kg | 2.96 kg |

