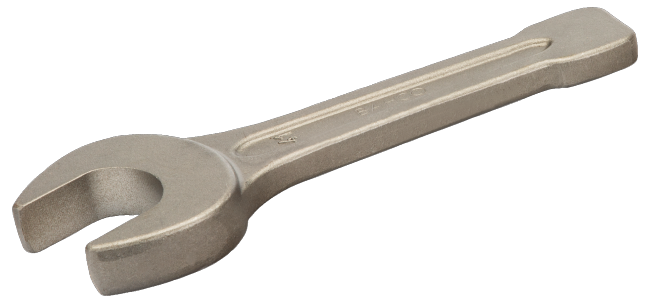




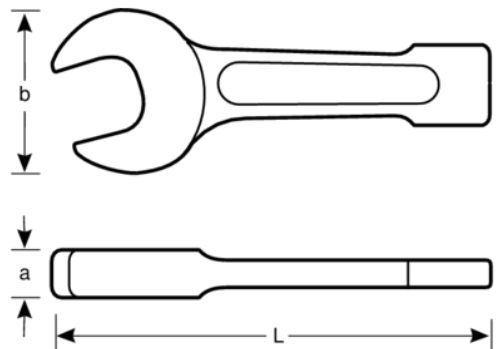
**133SGM**

**Schlag-Maulschlüssel, metrisch**



## PRODUKTDDETAILS



- Maulstellung 15° für bessere Zugänglichkeit
- Schlagende für schwerste Beanspruchung, besonders geeignet für Werften, Eisenbahnen und Schwerindustrie
- Stahlgrau
- Aus geschmiedetem Spezialstahl
- Mit kurzem, starken Profilschaft
- Geprüft nach: DIN 133



**Follow the Fish!**



## PRODUKTEIGENSCHAFTEN

Produkt		<b>L</b>	<b>a</b>	<b>b</b>	
<b>133SGM-27</b>	27 mm	180 mm	16.0 mm	56 mm	305 g
<b>133SGM-30</b>	30 mm	190 mm	17.0 mm	62 mm	430 g
<b>133SGM-32</b>	32 mm	190 mm	17.0 mm	62 mm	440 g
<b>133SGM-36</b>	36 mm	215 mm	17.5 mm	76 mm	700 g
<b>133SGM-41</b>	41 mm	235 mm	18.5 mm	86 mm	930 g
<b>133SGM-46</b>	46 mm	255 mm	20.0 mm	98 mm	1280 g
<b>133SGM-50</b>	50 mm	275 mm	21.0 mm	105 mm	1565 g
<b>133SGM-55</b>	55 mm	300 mm	23.0 mm	116 mm	1940 g
<b>133SGM-60</b>	60 mm	320 mm	24.5 mm	128 mm	2500 g
<b>133SGM-65</b>	65 mm	342 mm	27.0 mm	138 mm	3510 g
<b>133SGM-70</b>	70 mm	375 mm	30.0 mm	154 mm	4260 g
<b>133SGM-75</b>	75 mm	375 mm	30.0 mm	154 mm	5000 g
<b>133SGM-80</b>	80 mm	408 mm	34.0 mm	174 mm	5830 g
<b>133SGM-85</b>	85 mm	408 mm	34.0 mm	174 mm	5860 g
<b>133SGM-90</b>	90 mm	445 mm	38.0 mm	194 mm	8140 g
<b>133SGM-95</b>	95 mm	445 mm	38.0 mm	194 mm	8230 g
<b>133SGM-100</b>	100 mm	485 mm	44.0 mm	215 mm	11500 g
<b>133SGM-105</b>	105 mm	485 mm	44.0 mm	215 mm	11500 g
<b>133SGM-110</b>	110 mm	510 mm	47.0 mm	235 mm	13650 g
<b>133SGM-115</b>	115 mm	510 mm	47.0 mm	235 mm	13500 g
<b>133SGM-120</b>	120 mm	545 mm	50.0 mm	255 mm	17850 g

